

JULY 2006

# PLAT OF WHISPERING WINDS

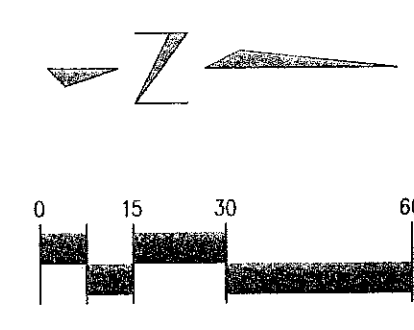
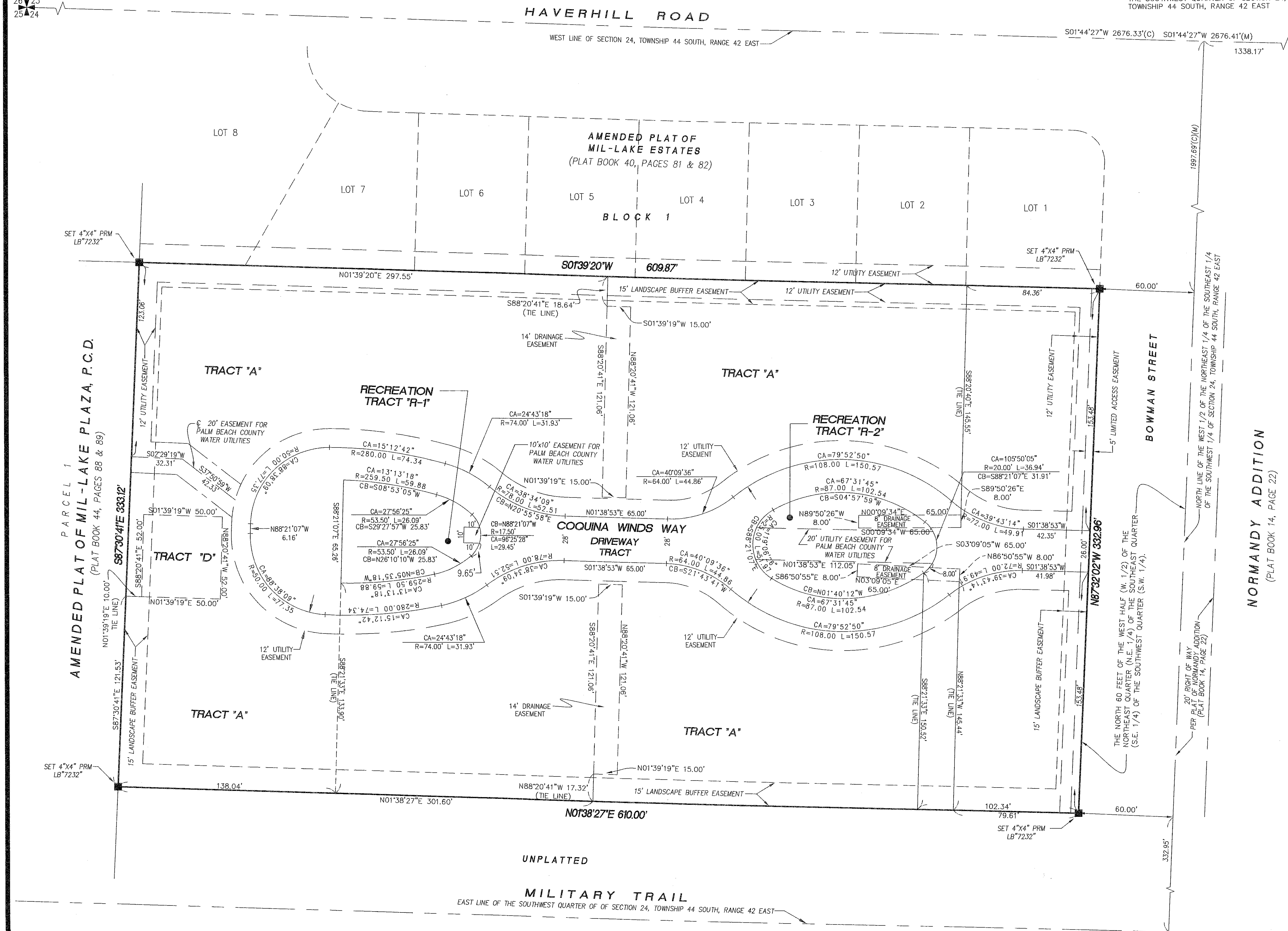
SHEET No.2 OF 2

123

A PORTION OF THE WEST ONE-HALF OF THE NORTHEAST ONE-QUARTER OF THE  
SOUTHEAST ONE-QUARTER OF THE SOUTHWEST ONE-QUARTER OF SECTION 24,  
TOWNSHIP 44 SOUTH, RANGE 42 EAST,  
CITY OF GREENACRES, PALM BEACH COUNTY, FLORIDA

FOUND PALM BEACH COUNTY BRASS DISK SET IN CONCRETE AT THE SOUTHWEST CORNER OF SECTION 24, TOWNSHIP 44 SOUTH, RANGE 42 EAST.

FOUND PALM BEACH COUNTY BRASS DISK SET IN CONCRETE AT THE NORTHWEST CORNER OF THE SOUTHWEST QUARTER OF SECTION 24, TOWNSHIP 44 SOUTH, RANGE 42 EAST



NORMANDY ADDITION  
(PLAT BOOK 14, PAGE 22)

- LEGEND**
- R = RADIUS
  - CA = CENTRAL ANGLE
  - L = ARC LENGTH
  - CHB = CHORD BEARING
  - CH = CHORD
  - R/W = RIGHT-OF-WAY
  - ORB = OFFICIAL RECORDS BOOK
  - C/L = CENTERLINE
  - U.E. = UTILITY EASEMENT
  - D.E. = DRAINAGE EASEMENT
  - L.A.E. = LIMITED ACCESS EASEMENT
  - P.B. = PLAT BOOK
  - P.C. = PAGE
  - = SET PERMANENT REFERENCE MONUMENT  
4"x4" CONCRETE MONUMENT WITH  
DISK STAMPED "PRM LB 7232"

WHIDDEN SURVEYING & MAPPING, INC.  
AUTHORIZATION No. LB7232